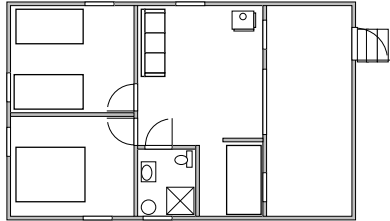


LARGE CABINS

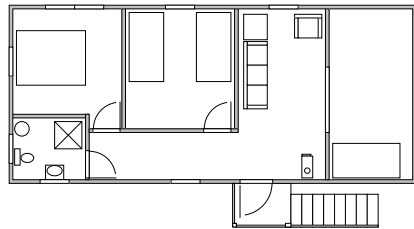
TAMARACK

Up to 6 in three bedrooms, one with a queen bed, one with twin beds and one with a bunk bed; sitting room, stall shower, large screen porch, great view.



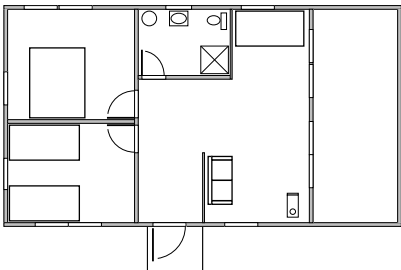
DRIFTWOOD

Up to 5 in two bedrooms, one with a queen bed, one with two twin beds and a single bed in an alcove; stall shower, screen porch, excellent lake views.



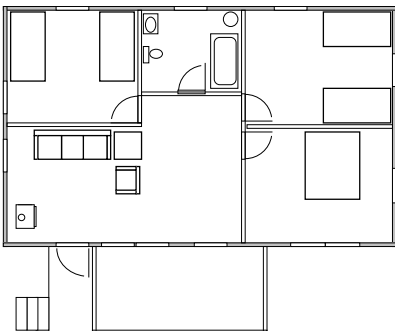
BIG ROCK

Up to 4 in two bedrooms, one with a queen bed, one with two twin beds; sitting room, stall shower, large screen porch, outstanding lake views.



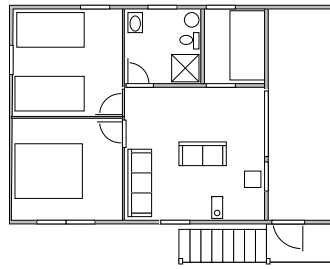
BALSAM

Up to 5 in two bedrooms, one with queen bed and one with two twins and a single bed in alcove; sitting room, stall shower, screen porch, excellent lake views.



GREENWOOD

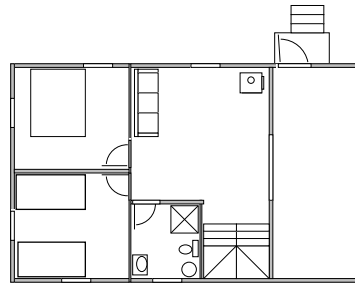
Up to 7 in three bedrooms, one with queen bed, one with two twins, and one with a bunk and a single twin; tub-shower, sitting room, large screen porch, excellent lake views.



LARGE CABINS cont.

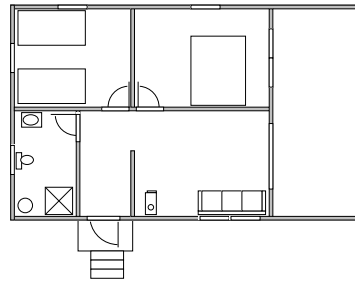
TREEHOUSE

Up to 6 in three bedrooms, one with a queen, one with twins and one with a bunk bed, stall shower, sitting room, screen porch, outstanding lake views.



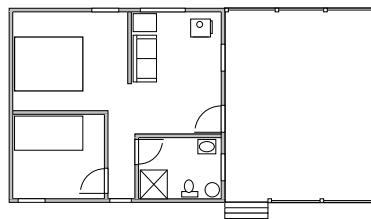
HEMLOCK

Up to 7 in three bedrooms, one with a queen, one with two twins and second floor with three twin beds in large open room; stall shower, sitting room, large screen porch, excellent lake views.



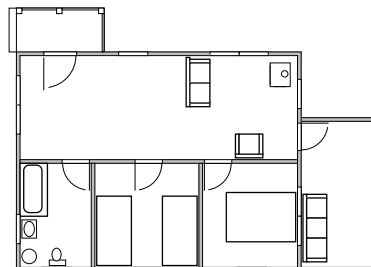
BIRCHWOOD

Up to 5 in two bedrooms, one with a queen, one with bunk bed and twin; stall shower, sitting room, large screen porch with outstanding lake views.



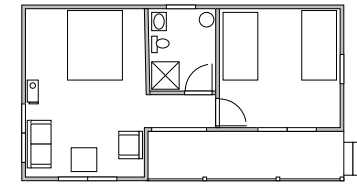
NASSAU

Up to 4 in two rooms, one with queen bed and one with bunk bed; part of main bedroom serves as sitting room, stall shower, large open deck, at water's edge, outstanding lake views.



REDWOOD

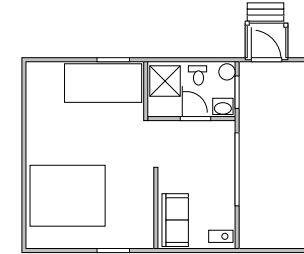
Up to 5 in two bedrooms, one with double bed and one with a twin and a bunk bed; sitting room, tub-shower, large screen porch, close to main camp.



MEDIUM CABINS cont.

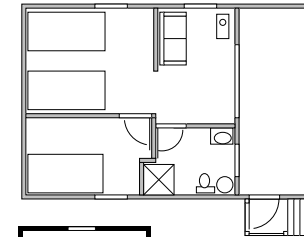
POPPLE

Up to 4 in two rooms, one with a queen and sitting room, one with twin beds; stall shower, small open porch, at water's edge with sweeping lake views.



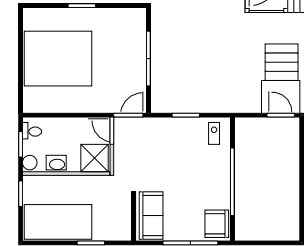
PINE

Up to 3 in one room, One queen bed and one twin bed, stall shower, screen porch, excellent lake views.



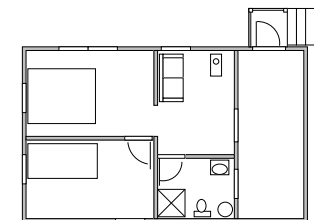
MAPLE

Up to 3 in two rooms, One with two twins, one with a single twin, stall shower, screen porch, excellent lake views.



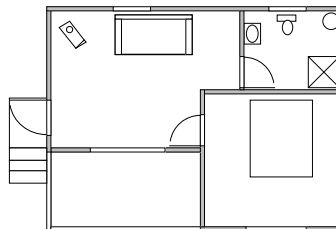
SPRUCE

Up to 4 in two bedrooms, one with a queen, one with a bunk; stall shower, small screen porch. View of the lake through trees.



CEDAR

Up to 4 in two bedrooms, one with a queen, one with a bunk; stall shower, small screen porch. Lake view through trees.



HUNTERS

Up to 2 in one room with a queen bed, day bed in sitting room ; stall shower, small screen porch. Not on the lake but very private and still close to main camp.

TENTLETS 1,2,3,4 & 7 CABINS 5 & 6

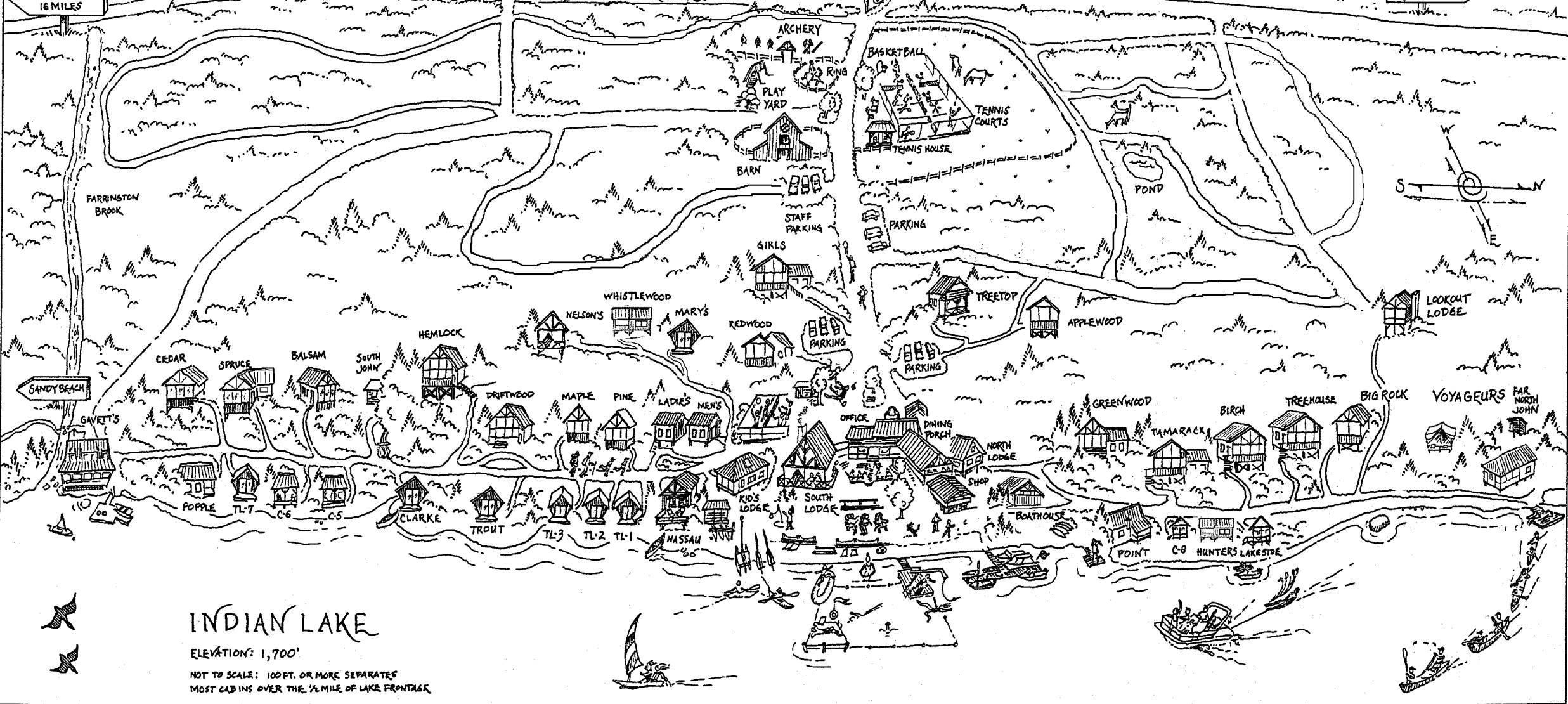
Up to 2 in one room at water's edge with trail john nearby. Tentlets have two twin beds. C5 and C6 have double beds.

TIMBERLOCK

SPECULATOR
16 MILES

ROUTE 30

SABAE 5 MILES



INDIAN LAKE

ELEVATION: 1,700'

NOT TO SCALE: 100 FT. OR MORE SEPARATES
MOST CABINS OVER THE 1/2 MILE OF LAKE FRONTAGE